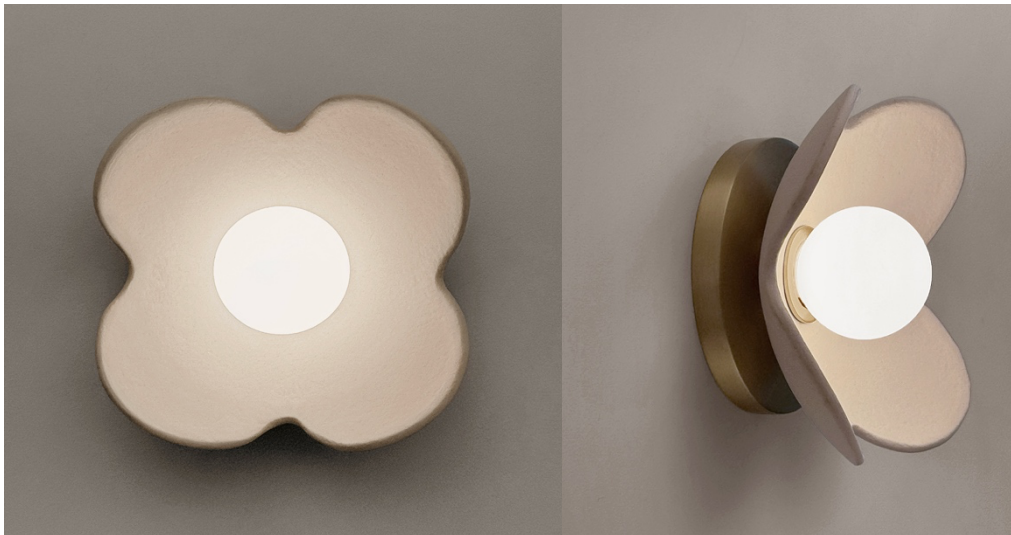
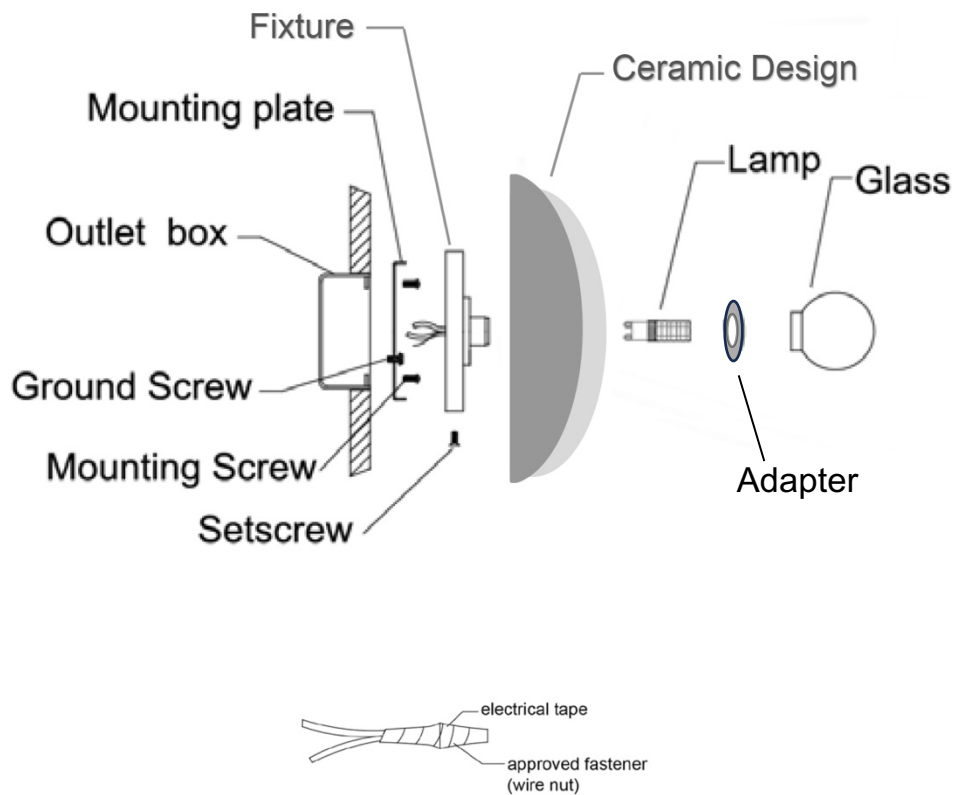


CHARDEAN CHUM STUDIO CLOVER LIGHT



Perfect on ceiling or wall, Clover is modern yet classic handmade porcelain design. Frosted blown glass shade (6cm), dimmable LED bulb, brushed brass or nickel backplate. Approx. size: 16cm h x 16cm w x 10cm d.

INSTALLATION



INSTALLATION PREPARATION

To ensure successful installation, the instructions and diagram(s) should be read and understood. All electrical connections must be made in accordance with the National Electric code and local codes and ordinances.

Remove the fixture and parts from the packaging and check that all parts are found.

TOOLS NEEDED

Blade screwdriver, Phillips head screwdriver, slip joint pliers, wire cutter/stripper, electrical current tester, stepladder and electrical tape.

INSTALLATION STEPS

INSTALLATION MUST BE DONE BY A LICENSED ELECTRICIAN.

1. Turn off the entire electrical circuit to which the lighting fixture is to be attached.
2. If an existing fixture is being replaced, remove it and note to which of the wires in the outlet box the fixture was attached. The BROWN wire will be the "HOT" lead, and the BLUE wire will be the "NEUTRAL" or "Common" lead. A green or bare copper wire is the "Ground".
3. This fixture is designed to be mounted on an outlet box or wall or ceiling. The box must be securely mounted to the structure of the building.
4. Attach the mounting plate to the outlet box using the mounting screws.
5. Fasten the bare ground wire to the green (or bare copper) wire in the outlet box or the mounting plate. Never fasten the ground wire to the black or "hot" wire. Failure to follow this instruction could result in serious injury or death.
6. Connect the BLUE fixture wire to the BLUE wire in the outlet box. Fasten the wires together with a wire nut. Starting about 2cm below the wire nut, tightly wrap the connection with electrical tape so the tape seals the end of the wire nut. Make sure there is no exposed wire or strands that could cause a dangerous short circuit.
7. Connect the BROWN fixture wire to the BROWN wire in the outlet box. Fasten the joined wires with the wire nut and wrap the connection with electrical tape as done in step 6.
8. Tuck the wires into the outlet box or wall/ceiling. Place the fixture over the mounting plate and secure them together using the 2 set screws.
9. Hold the ceramic in place on the fixture, centering the socket in the middle of the ceramic hole. Then screw the metal adapter ring onto the fixture socket to keep the ceramic in place. CAUTION: Align threads of the socket and metal adapter ring properly for a smooth rotation before screwing adapter fully into place. Step back, check that ceramic looks straight and gently adjust if necessary.
10. Push the G9 bulb into the fixture socket. The fixture is rated for 5-watt LED type G9 lamp. Do not exceed recommended wattage.
11. Screw the glass globe onto the fixture. CAUTION: Align threads of the socket and glass shade properly for a smooth rotation before screwing the glass fully into place.
12. Restore power to circuit at breaker or fuse box.

NOTE: The important safeguards and instructions outlined on this sheet are not meant to cover all possible conditions and situations that may occur. It must be understood that common sense, caution, and care are factors that cannot be built into a product. Caution and care must be supplied by the person(s) installing, operating, and maintaining this lighting fixture.

GENERAL CLEANING AND CARE

Please clean with a soft, dry cloth ONLY. Do not use cleansers.

CLOVER – Specifications

DIMENSIONS

Fixture Depth (cm)	10
Fixture Height (approx. cm)	16
Fixture Width (approx. cm)	16
Backplate/Canopy/Base width (cm)	12
Backplate Shape	Circle
Product Weight	1kg approx.

SHADE AND FIXTURE DETAILS

Fixture Color/Finish	Brushed Brass or Nickel
Fixture Material	Metal
Shade spherical width	6cm
Shade Material	Frosted Glass
Shade Color	Opal Matte
Design Piece Material	Handmade Ceramic

LAMPING

Bulb Type	G9 LED bulb
Connection Type	Hardwired
Damp/Wet Rating	Damp Rated, IP42
Included	G9 Dimmable, 2700K LED bulb – 3W
Wattage (watts)	Bulb must not exceed 5w
Lumens	300
Certifications and Listings	UL / SAA approved